



## INVID-DDPB3

### AC Surveillance Power Enclosure with Automatic Source Switching and Remote Monitoring

The Defender Box DDPB3 is a rugged, weatherproof surveillance power platform built to keep cameras running where reliable power doesn't exist. It pairs a Victron solar charging system with a high-capacity lithium battery and AC input, automatically switching between solar and grid power to maintain continuous uptime — on sunny days, cloudy stretches, or sites with no utility connection at all. Running entirely on solar and battery, the DDPB3 keeps a full PTZ-and-turret camera load online for days at a time; connect AC and there's no power ceiling. Integrated Victron monitoring lets teams check system health, diagnose issues, and even power-cycle cameras remotely — cutting truck rolls and keeping deployments live. Engineered for construction sites, parking lots, perimeters, and remote commercial areas, the DDPB3 delivers a clean, self-sufficient platform for powering and protecting critical surveillance equipment far from traditional infrastructure.

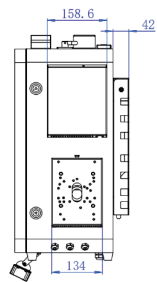
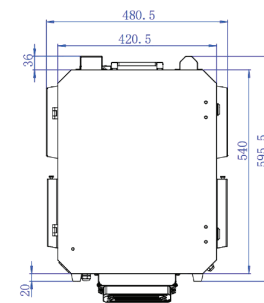
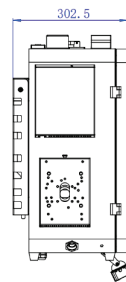
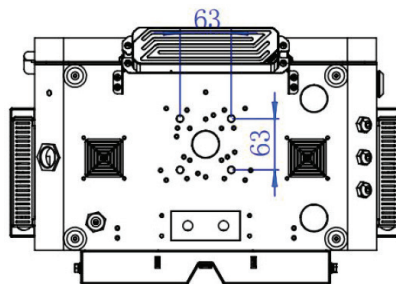
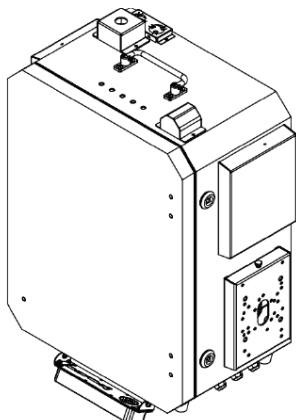
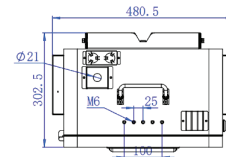
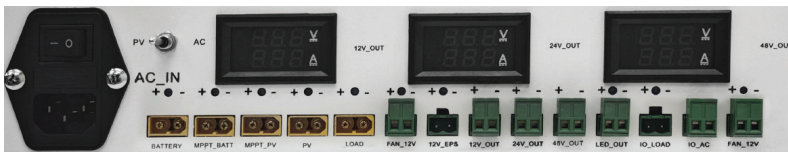
#### Features

- Hybrid solar-and-AC power system with automatic source switching — maintains uptime on solar, grid, or battery with no manual intervention
- Victron solar charging system (SmartSolar MPPT 100/20 controller, Cerbo GX hub, and SmartShunt battery monitor) for efficient, regulated charging
- Integrated AC & Solar Control Module (ASCM) accepting 110–277VAC for direct battery charging, with AC-fail alarm output
- High-capacity 24V 114Ah ternary lithium battery (~2,530Wh) with integrated heater and CANBUS communication, on a pull-out tray for easy service
- Extended off-grid runtime — up to 4 days at 25W on solar and battery, supporting one PTZ and two turret cameras on solar alone; no camera-count limit when running on AC
- Multi-voltage DC output for flexible device support: 12V EPS, dual 12V, 24V, and 48V rails, plus IO-controlled load output
- Solar input supporting client-supplied panels up to 580W
- Full remote visibility of system status through the integrated Victron monitoring platform (Cerbo GX + SmartShunt)
- Remote management — monitor operating status, troubleshoot, and turn cameras on/off remotely to reduce site visits
- Active thermal management with two UL-listed temperature-controlled fans and a cold-weather battery heater for reliable operation across climates
- Weatherproof AC power entry with IP68-rated stainless steel connector and UL-listed waterproof male/female connectors
- Flexible cable entry including 3/4" NPT knockout and cap, PG16 connectors, and clean cable-in routing
- Pre-installed mounting positions for 4G antennas and horn speakers to streamline wireless and deterrence installs
- Three pre-made camera mounting plates for fast, consistent camera installation
- Expandable interior — fourth/fifth-layer space with a detachable platform for routers, PoE switches, and additional edge devices
- Multiple mounting options including pole and wall brackets with PTZ support, fitting pole diameters from 3.5" to 9.8" (9–25 cm)
- Durable aluminum-and-stainless construction with integrated hand carrier for portable, installer-friendly deployment

**PLEASE NOTE: CAMERAS AND ACCESSORIES SHOWN ARE FOR DEMONSTRATION PURPOSES ONLY & ARE NOT INCLUDED.** The unit includes a versatile mounting bracket for both wall & pole installations, with pole straps that accommodate diameters from 3.5" to 9.8". A wide range of additional accessories and options are available, including but not limited to: IP cameras, mobile routers, wireless peer-to-peer bridges, network switches, & 4/8 channel chassis NVRs. This unit is also compatible with most select third-party products.

Model	INVID-DDPB3
Pre-installed Electric system	
Ternary lithium battery	24V/114Ah, total 2530.8Wh (Battery own capacity) Running time: 3.7 days for 25W (DOD 80%) Installed at the first layer of box, pull-out design
Solar system	With sockets for battery input, solar input, mppt pv input, mppt batt input, load connection
AC system	With USA standard quick connector for AC power AC(110V-277V) power can directly charge battery With IO AC fail alarm out
Load system	With 1 *12V EPS output. Rate current 2A, Max current 3A With 2 *DC12V output. Rate current 7A, Max current 8A With 1 *DC24V output. Rate current 3A, Max current 4A With 1 *DC48V output. Rate current 5A, Max current 7A With 1 *IO load for remotely turn on and off for load output
Victron solar equipment	100/20 MPPT+ Cerbo GX+ SmartShunt The solar panel is client-supplied by default, with a maximum supported power of 580W
Fourth and Fifth Layer of Box	
Spec.	Space for devices like router and poe switch The platform is detachable Note: 4G router need connects to 12V EPS
Enclosure	
Pre-installed air ventilation	With Air supply and exhaust hole With 2 temperature controlled fan (12 V)
Pre-installed holder or hole	For antenna and speaker
Pre-installed mounting plates	For cameras. 3 *pre-made camera mounting plate
Material	Aluminum and stainless steel combined
Mount	Pole & Wall (9-25CM diameter pole is perfect)
Dimension (W x H x D)	18.9 x 21.3 x 13.4 in (480x540x340mm) (Including Mount)
Weight	88.6 lbs (40.2kg) (with battery included) 46.3 lbs (21kg) without battery (including package box and accessory bag)

### Pre-installed Electric System



### Ordering Information

**INVID-DDPB3: xxx**

*InVid Tech, reserves the right to make changes to improve our products at any time without notice; we are not responsible for misprints.*