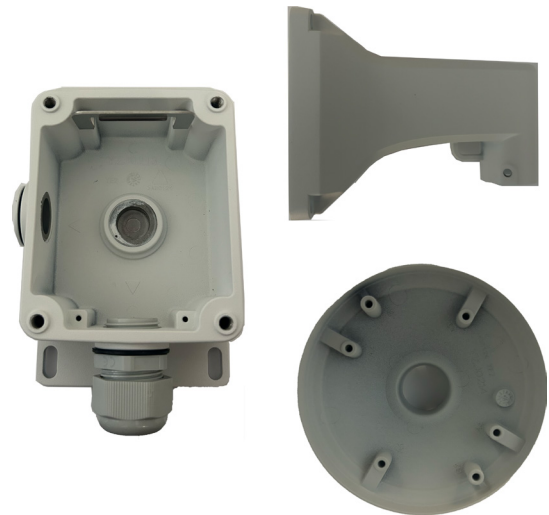


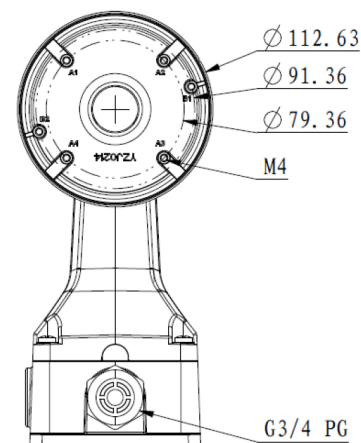
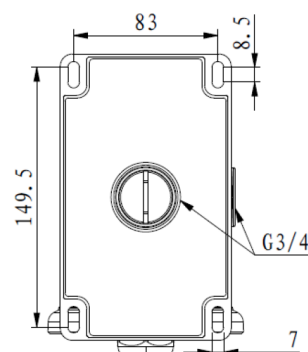
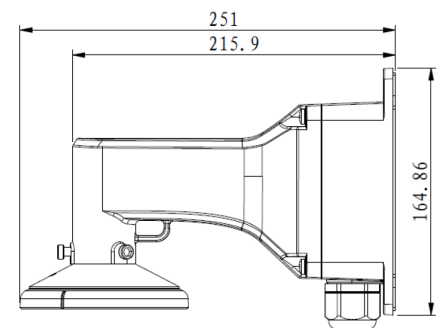
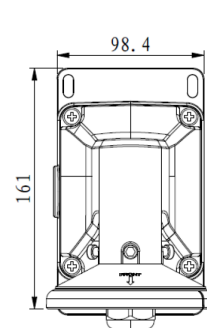


IPM-DRWM6

Wall mount, with three threaded conduit knockouts



Model	IPM-DRWM6
Material	Aluminum alloy
Color	White
Dimension	9.9 x 6.5 x 4.4 in (251 x 164.8 x 112.6 mm)
Load Bearing	The wall must be strong enough to withstand at least 3 times the weight of the camera and the bracket.
Net Weight	2.1 lb (962g)
Working Temperature	-40°F ~ 140°F (-40°C ~ 60°C)
Working Humidity	10%~90%



Ordering Information
IPM-DRWM6: Wall Mount