



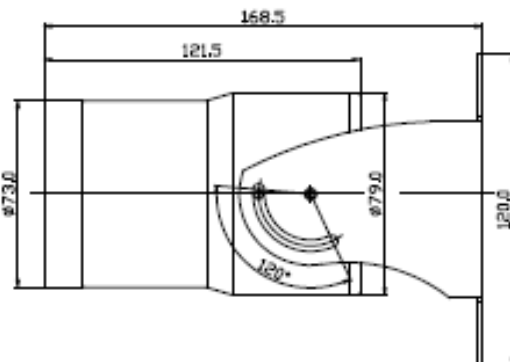
### PAR-ALLBSSXIRA2812

2 Megapixel All-in-One Outdoor Stainless Steel Bullet, Motorized A/F 2.8-12mm, 65' EXIR Range, 12VDC

#### Features

- 2 Megapixel 1080p (TVI/AHD/CVI) Resolution
- All-in-One Technology (TVI/AHD/CVI/Analog 960h) with Separate Analog BNC
- Motorized Auto-Focus 2.8-12mm Lens
- True Day/Night
- 65' IR Range with EXIR Technology
- Up The Cable (UTC) Function
- Stainless Steel Housing (Grade Steel | AISI 316)
- IP68 Waterproof
- OSD Remote on Detachable Cable
- 12VDC Only Operation
- NDAA Compliant

Model	PAR-ALLBSSXIRA2812
Image Sensor	1/3" Panasonic CMOS image sensor
Total Pixel	1956(H) x 1266(V) = 2,476,296
Active Pixel	1944(H) x 1092(V) = 2,122,848
Resolution	HD-TVI: NTSC: 1080p/30fps, 720P/60fps, PAL: 1080P/25fps, 720P/50fps, ANALOG : 700TVL
Scanning System	Progressive
Video Output	TVI/AHD/CVI/CVBS
S/N Ratio	More than 50dB (AGC off)
Min. Illumination	Color : 1.0 lux, BW : 0.5 lux Color DSS : 0.002 lux, BW DSS : 0.0008 lux
AGC	Off/0 - 10
Electronic Shutter	AUTO/MANUAL(1/30 ~ 1/30,000 sec)
SENS-UP	Off/X2 - X32
Brightness	0 - 20
WDR/BLC	Off/BLC/WDR
D-WDR(ACE)	Off/Low/Middle/High
Defog	Off/On
Day & Night	AUTO/Color/B&W/Extern
White Balance	AUTO/AUTOext/PRESET/Manual
3D DNR	Off/Low/Middle/High
Mirror	Off/On
Flip	Off/On
Sharpness	0 -10 steps
Privacy Mask	21 Masks (BOX 15, POLYGON 7)
Motion Detection	Off/On
Language	ENG/CHN/CHN(S)/JPN/KOR
Housing	IP68 Waterproof, Grade Steel   AISI 316
IR Range	65'
Power Source	DC12V ±10%
Power Consumption	Max 4.5 Watt
Operating Temperature	-4° ~ 122°F (-20°C ~ 50°C)
Operating Humidity	10% to 85%
Lens	2.8~12mm DC auto iris motorized MP lens (ICR)
Dimension (Ø x L x H)	2.83 x 6.63 x 4.72 inches (Ø72 x 168.5 x 120mm)
Weight	3.86 lbs (1520 grams)



#### Ordering Information

**PAR-ALLBSSXIRA2812:** 2 Megapixel Bullet, 2.8-12mm Motorized