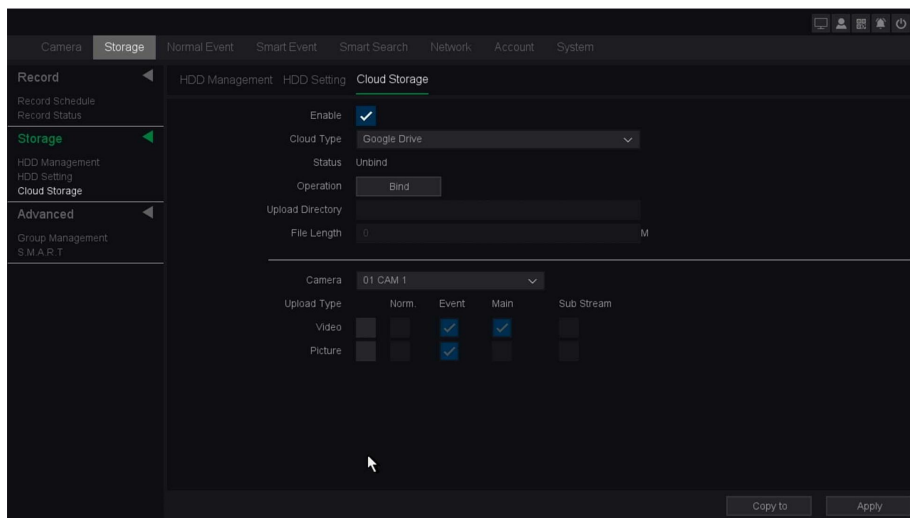


## Protect Cloud Storage Setup

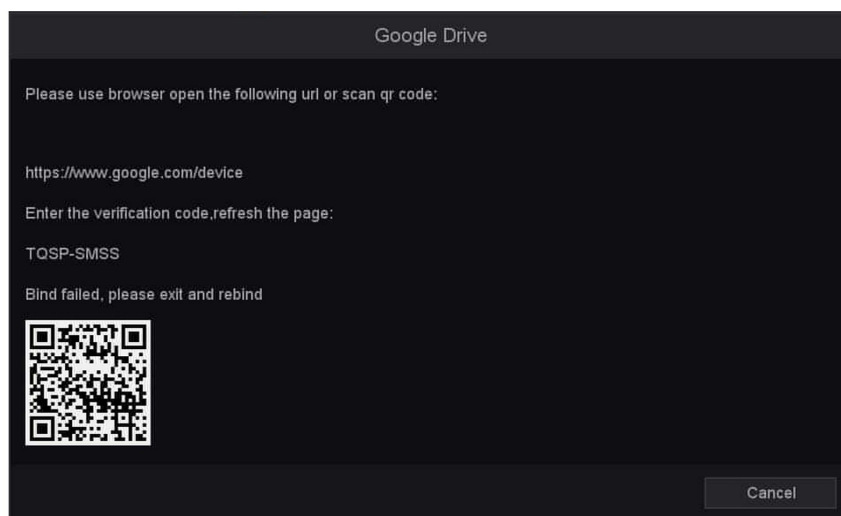
Protect Cloud Storage allows our users to take video stored on their hard drives and upload to either Google Drive or Drop Box. Pricing is all based on the costs on which Google Drive or Drop Box charge when signing up. A hard drive must be installed within the DVR/NVR for Cloud Storage to work.

\*Please Note: DVR/NVR must be networked for Cloud Storage to function properly. You can review “Protect P2P QR Quick Setup” document for assistance if needed, a link can be found at the end of this document.

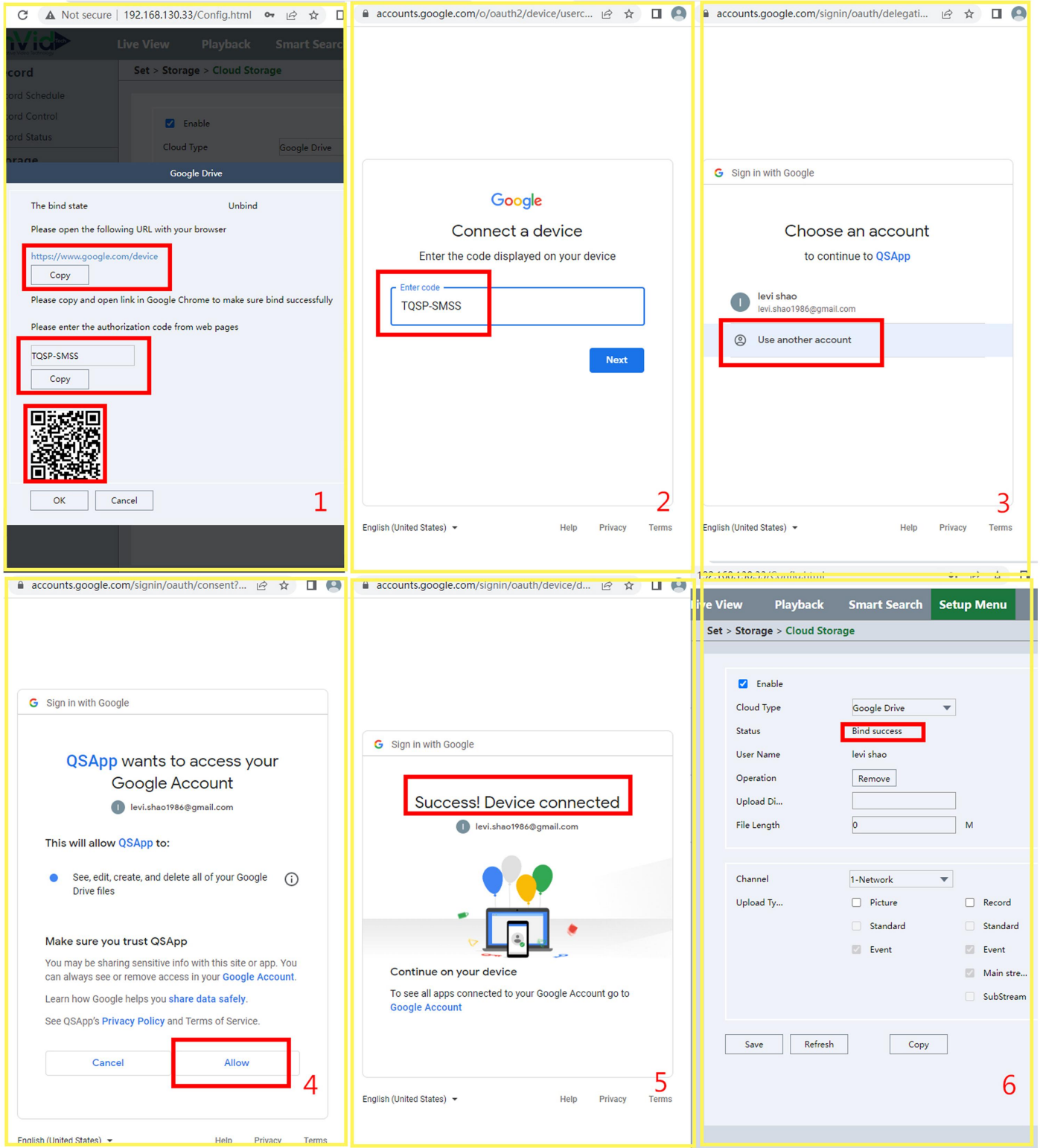
- Right click mouse and choose **Storage** menu, log into your DVR/NVR (default: admin/1234567u).
- Select **Storage** menu – across top, Storage - at left, and **Cloud Storage** - at submenu.
- Check off the **“Enable”** box across top.
- Under “Cloud Type” choose either Google Drive or Dropbox.
- “Status” will show as “Unbind” until setup is complete. For “Operation” hit the “BIND” button.

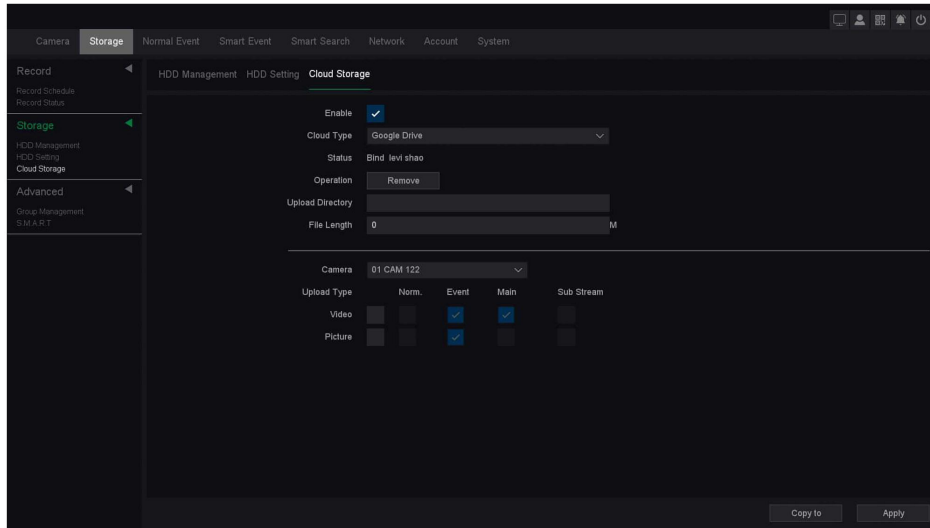


- A window will open and load a Verification Code as well as a QR Scan box.
- To setup from your phone browser or PC browser: open your camera and hold it up to the QR Scan box, your browser will recognize it and show a display page at top, click and it will launch your browser or simply put into browser of your phone manually. Follow steps of inputting the verification code, signing into your account, and “Allowing.”

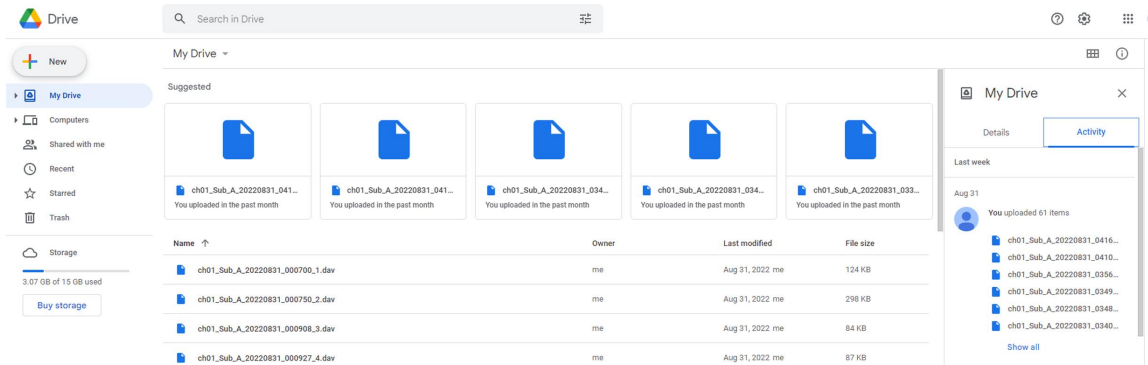


- Once you fill in/Allow your information to your Google Drive or Drop Box you will see a "Bind Success", at that point you can hit "Logout" to close window.

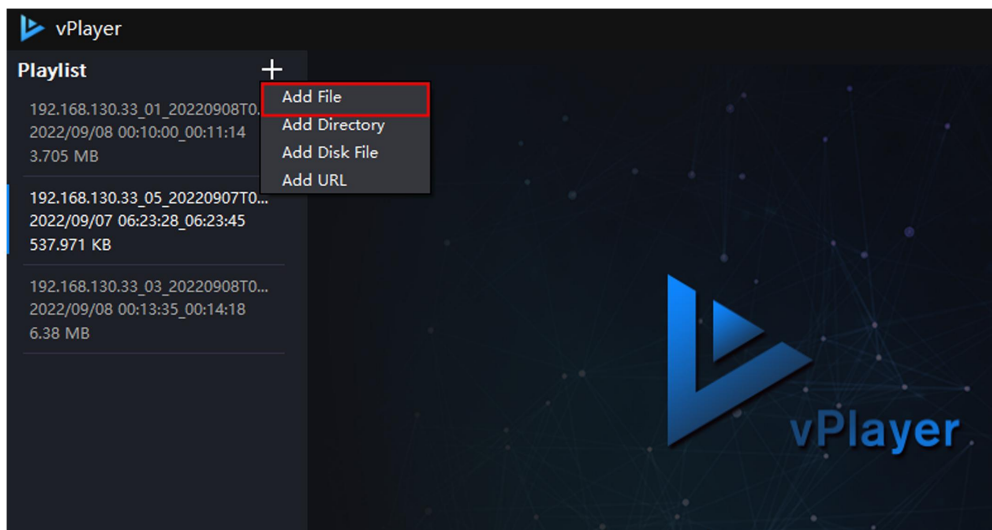


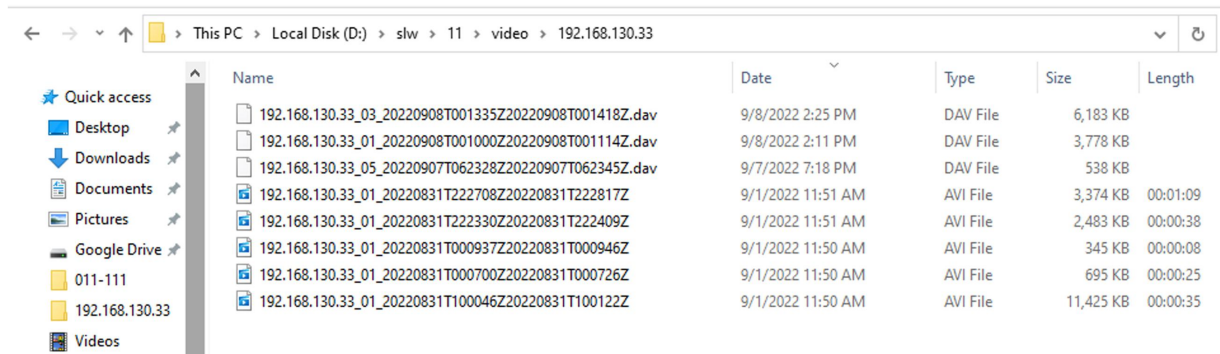


- The Status line will then read “bind YourLoginName.”
- Under “Upload Directory” you will make a file name of your choice. This file path will automatically appear within the Google Drive or Drop Box directory.
- For “File Length” the default value is 0M (megabytes). If left at zero you will not cap the video clips, if the value is changed, it will then cap the video clips once they reach that selected file length.
- For “Channel,” select the desired camera(s) and if you want Video or Pictures to be saved, check that box.
- Hit Apply to save.

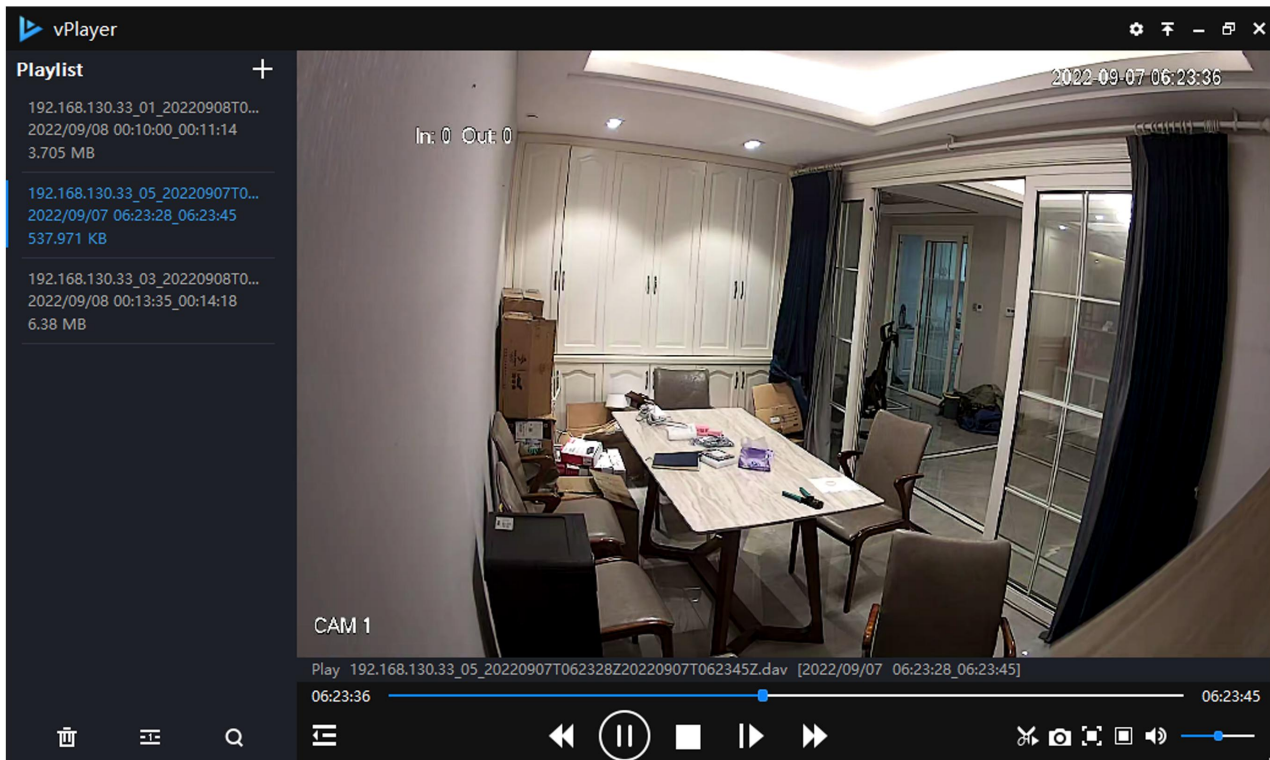


- Once you log into your drive, the Folder (Upload Directory) you created will automatically appear.
- Open folder/directory and you will see the files within.





- To playback the files, download the vPlayer, which can be found on our website (link at end of document).
- Launch the vPlayer and hit the plus sign (+) and choose “Add File.”
- Browse your file path, select file, and playback will begin.



FAQs, Additional Documents, Guides, Software, Upgrades, and more can be found on the Protect Series Support Page. Scan the QR code or access the link below.

<https://info.invidtech.com/protect-support-page>